



Accelerator[®]

Woodburning Fireplace



heatilator[®]
The first name in fireplaces

Accelerator,

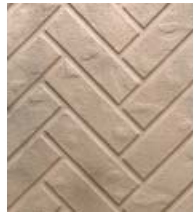
Exceptional Value and a Choice of Sizes and Features

- Two firebox opening sizes (36" and 42") give more options and price selections
- Choice of **heat circulating or radiant versions**
- Substantial firebox depth (19-3/4") provides **greater visual hearth area**
- The circulating design allows the addition of a **broad range of optional trim and performance accessories**
- **Full-textured refractory lining** in choice of herringbone or traditional pattern, finished in a dusky rose color
- A hearth extension is required
- SL300 Series venting
- Tested and listed to **UL safety standards**
- **Heatilator 20-year Buyer Protection Plan**

Options*



DM Doors



Herringbone

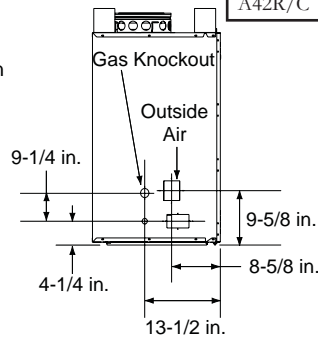
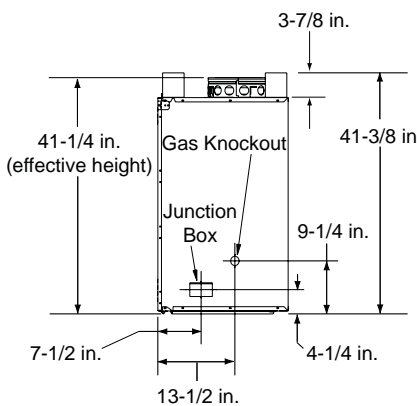
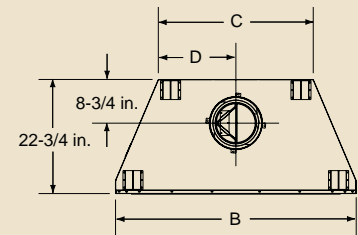
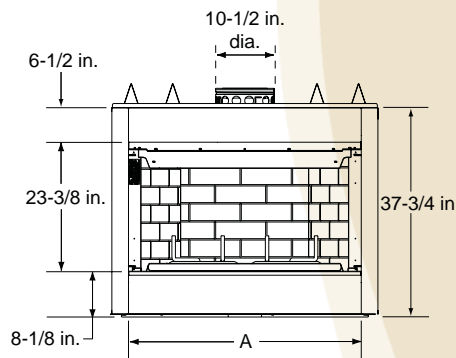
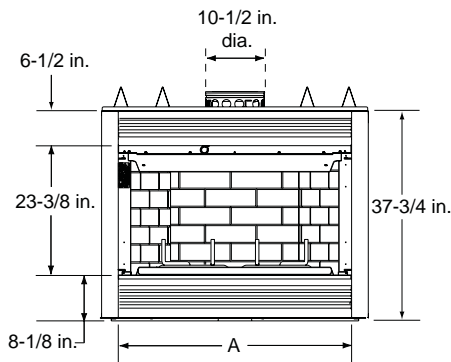


Traditional



Fireside Gas Logs

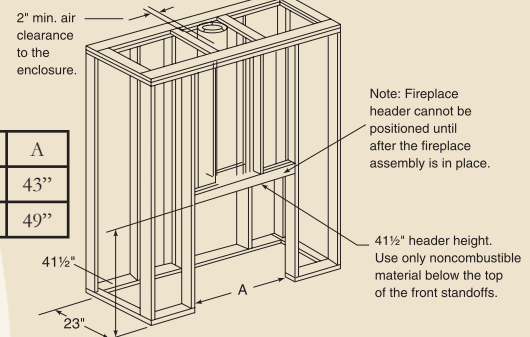
Product Dimensions



	A	B	C	D
A36R/C	36"	42"	28-1/4"	14-1/8"
A42R/C	42"	48"	30-7/8"	15-1/2"

Framing Dimensions

	A
A36R/C	43"
A42R/C	49"



AVAILABLE FROM

heatilator

The first name in fireplaces

a brand of Hearth & Home Technologies Inc.

1915 West Saunders Street • Mt. Pleasant, Iowa 52641

800-927-6841 • heatilator.com

The information provided in this literature is for planning purposes only. Please consult the installation manual for actual installation.

*Please consult the MSRP book for a complete list of optional accessories. Circulating photo on cover shown with traditional refractory, Phillips Hall mantel and custom marble. Radiant photo on cover shown with DM doors, Mt. Vernon mantel and black marble.

HTL-1022U-0307